

# RECALBOX 7.2

23/04/2021

## MAJOR NEW FEATURES:

### Light-Gun Games! ALL

Play more than 250 lightgun games on many different systems (Arcade, Megadrive/MegaCD, Dreamcast, Playstation, ...), **no configuration needed!**

Now gathered under a new "LightGun" virtual system.

Requirements: One Wiimote and one Mayflash DolphinBar per player.



*All light gun games now available... without any user configuration!*

VECTREX

System Lightgun

Like Time Crisis, Duck Hunt, Lupin The Third

"Shoot'em all! No one must reach you!"

Example of lightgun: NES Zapper, Light Phaser, Super Scope, Sega Menace...

Materials needed for the lightgun: Mayflash Dolphinbar, Wiimote

FAVORITES

# LIGHTGUN

Commodore 486/486

Commodore 486/486

AMSTRAD

215 JEUX DISPONIBLES, 1 JEU CACHÉ

CHOIX SÉLECTIONNER DÉMARRER KODI RECHERCHER START MENU QUITTER

## Better 3D performance on Raspberry Pi 4! PI4

The team has optimized Recalbox, allowing almost all N64, Dreamcast, Naomi & Atomiswave games to run at full speed on Raspberry Pi 4!



## Overclock the Raspberry Pi 4! PI4

And for even more performance, we've tested and chosen 4 optimal overclock settings on the Raspberry Pi 4. Overclocking your Pi will increase the framerate on CPU and GPU intensive games.



# Improved PSX/N64/PSP performance on ODRROID-GO Advance/Super GO A/S

Play almost all PSX, N64, and PSP games at full speed on both ODRROID-GO Advance & ODRROID-GO Super!

## PSX



## N64



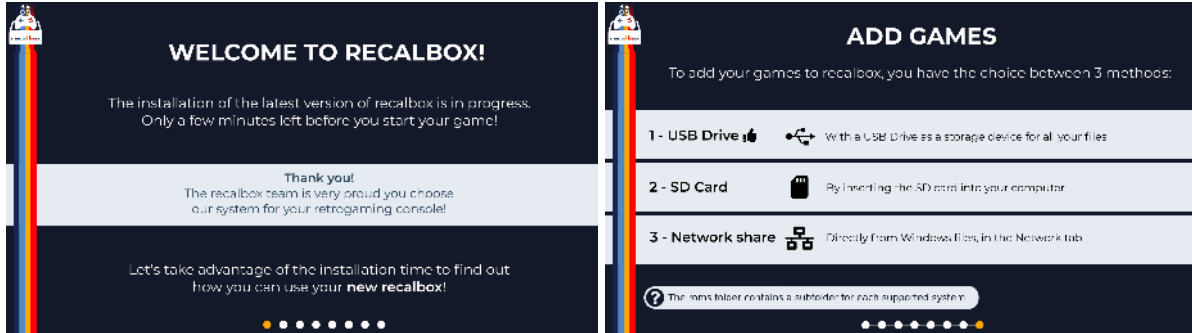
## PSP



# NEW FEATURES:

## Enhanced Installation ALL

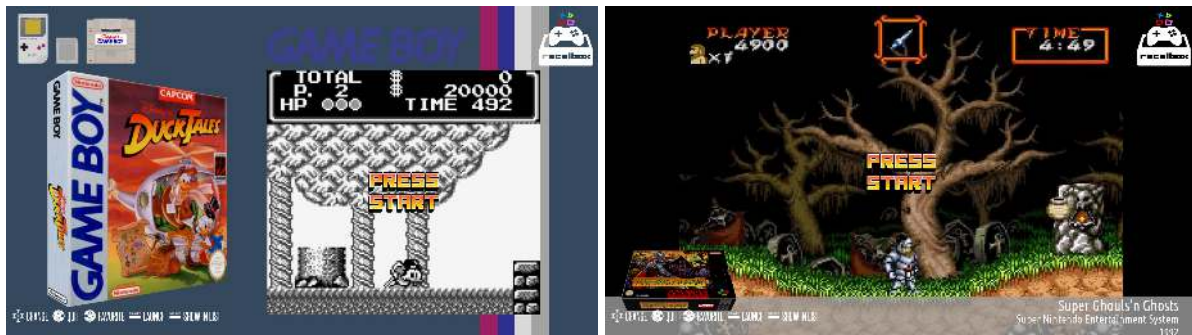
Discover just what Recalbox is capable of with 8 overview slides while installing for the first time. A tutorial is available on both the ODRROID-GO Advance and Super to help new users become familiar with the special buttons.



*The installation time is used to learn a lot of tricks about Recalbox!*

## New Game clips screensaver ALL

A new screensaver option -- play videos of your games with a plethora of options. Fast forward, rewind, add to favorites, start the game, and more!



*Don't touch anything, and let your Recalbox randomly launch your scrap videos!*

5 new supported systems are added to the nearly 120 systems already supported in Recalbox:

- **Wataru Supervision:** This cheap Game Boy clone was manufactured by Watara in 1992. It was later licensed to several third-parties, and released under many different names. 69 games have been officially released.
- **PICO-8:** A virtual console similar to the TIC-80 with over 4000 games available, largely popularized by the incredible success of "*Celeste*", the famous platformer initially developed by Noel Berry and Maddy Thorson on Pico-8 in 2015, before being released on all modern platforms in 2018!
- **Pocket Challenge V2:** A Japanese handheld console that specializes in educational games.
- **Elektronika BK:** BK (БК), Russian abbreviation for "бытовой компьютер" - "home computer" is a series of Soviet 16-bit home computers, developed under the brand Elektronika by NPO Scientific Center. Elektronika BK was the only "official" Soviet home computer. The BK-0010/BK-0011 and Terak 8510/A were manufactured from 1984 to 1993 and sold at the price of 650 Rubles, which was... almost 4 months of average salary!
- **EPOCH SuperCassette Vision:** The 2nd generation EPOCH console released in 1984 and counting a total of 30 officially released games and 3 unreleased. The porting of this Japanese emulator to libretro is a Recalbox exclusive!

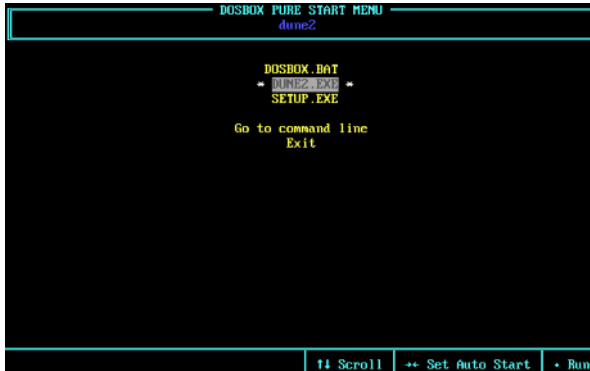


*With +120 systems supported, Recalbox is THE solution to preserve our childhood's video games!*

## New cores PLATFORM DEPENDENT

3 new emulators are also available, depending on your hardware:

- Libretro NeoCD added as NeoGeoCD core: loads CDs so much faster!
- Libretro DOSBOX Pure: Don't struggle with complicated DOS setups anymore! These games have never been more plug & play!

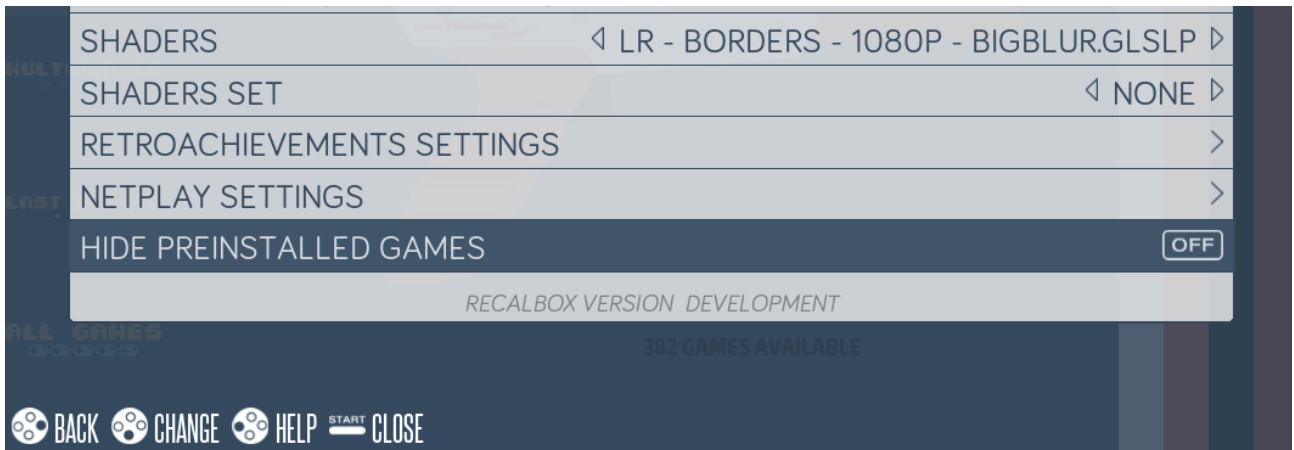


- Libretro-craft: A Minecraft clone available on x86 & x64 platforms only.



## Hide pre-installed games ALL

Pre-installed games are no longer copied into the user share. They stay on the system and can be hidden/shown using an option from the settings menu.



*Lots of new options are coming in Recalbox 7.2!*

## Dual Joycon support (Nintendo Switch controllers)

Recalbox now supports both left and right Joycons!  
In addition, you can use both joycons as a single combined controller!



## Bluetooth Audio

Connect your bluetooth headphones or speakers!  
(just pair them like you would a controller, for now).



*Headset, sound bar... with Bluetooth Audio compatibility, Recalbox opens the field of possibilities!*

## IMPROVEMENTS:

### Main menu ALL

The main menus have all been rewritten. They're now faster, consume less memory, and are more intuitive.

The most useful options have been moved so they're faster to access.

Reboots can now be delayed. This way, you can configure everything you need to before having to restart.

New options have been added:

- Swap A & B buttons: change the way you validate and cancel actions.
- Factory reset: reset all configurations (only keeps your games, saves, and scraped data)



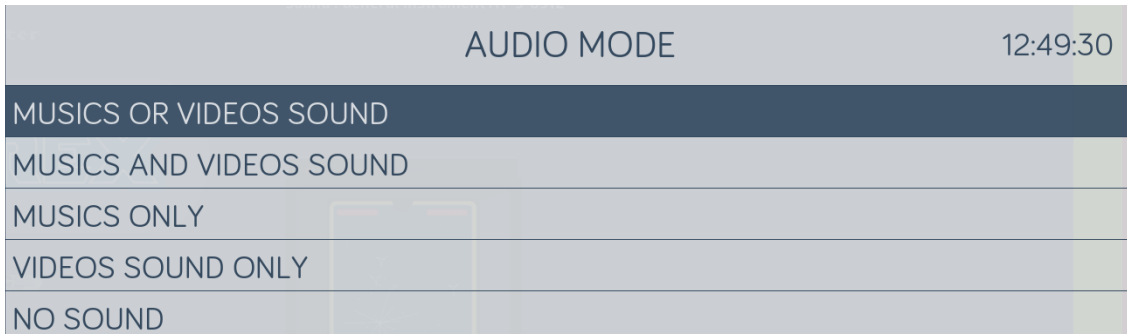


## Sound ALL

In-game video sound/music is now available!

You can choose between the following sound mode:

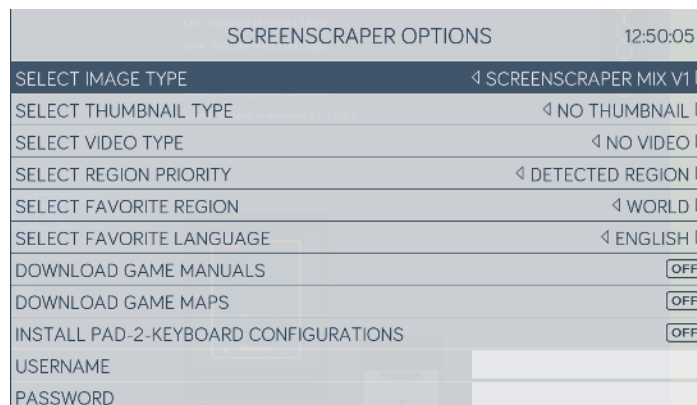
- Background music only (EmulationStation music)
- Video sound only (scraped videos)
- Background music AND video sound mixed
- Background music OR video sound (when playing videos in the new Gameclip screensaver)



## Internal Scraper ALL

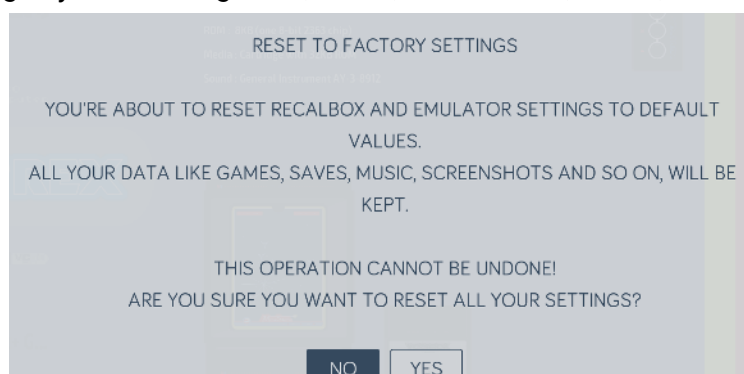
The internal scraper has been greatly enhanced:

- Improved menus. Now more intuitive, less clicks required to get things done.
- Better region priority management: get better metadata for your region.
- Ignore file referenced from .cue/.m3u and other multi-file roms: no more scraping the same game twice!



## System ALL

- Check image integrity when updating Recalbox
- Added a new Reset to Factory Settings option to reset all Recalbox & emulator settings without losing any user data: games, saves, screenshots, music, etc.



## Emulators

PLATFORM DEPENDENT

Many emulators have been updated and/or reconfigured for new features, or to achieve better performance.

- Dolphin updated to version 5.0-13178.
- Stella (A2600) updated to fix lots of bugs (Pitfall II, ...)
- Supermodel updated to version 839
- UAE updated to support CHD
- Np2Kai (PC98) updated to fix several issues
- Odyssey<sup>2</sup> updated to add Europeans/French models (new Retroarch options)
- Mupen64plus-next updated for better compatibility and performance! This core is now available on almost all platforms and performs very well!
- FBNeo updated to support latest game additions
- Libretro Duckstation is now available on all platforms!
- Beetle-Saturn updated to improve compatibility (PC only)
- Amiberry updated to version 3.3 for better performance & new options
- Libretro-Parallel-n64 updated and fixed on almost all boards (except low-end PIs)
- Vic20 is now shown as its own system, instead of only being available under C64
- Videopac+ is now available as its own system, instead of being available as Odyssey<sup>2</sup> sub-model
- Libretro MAME has been optimized to run full-speed on low-end PCs.
- ScummVM updated to v2.3.0 and merged with ResidualVM

## Bug fixes

PLATFORM DEPENDENT

Lots of bug fixes, as usual:

- Fixed the ODR0ID-GO Advance v1 controller
- Fixed the 8bitdo NES30 Pro rev1 controller mapping
- Fixed missing BIOS MD5 & other minor errors in BIOS database
- Removed useless BIOS files (palmos)
- Fixed the Retroarch shortcut on ODR0ID-GO Advance
- Fixed shaders on ODR0ID-GO Advance
- Fixed lost support of open and WPA-PSK-SHA256 WiFi keys
- Correction d'un problème de ventilateur avec le boîtier NESPi 4 Case

# Technical Features

## Buildroot ALL

Buildroot has been bumped to version 2020.11.

## Kernels PLATFORM DEPENDENT

Linux kernels have been bumped to:

- 5.4 for the ODROID XU4
- 5.8 for both x86 and x64
- 5.10 for all Raspberry Pis

Both ODROID-GO Advance & GO Super use a special Rockchip 4.4 kernel.

## PulseAudio ALL

We've moved from a pulse ALSA audio backend to PulseAudio! Recalbox now supports more audio devices -- and even Bluetooth audio!

## RECALBOX - CONTACTS ALL

*Have a question?  
Need details?*

### Contact us!

Fabrice  
[fabrice@recalbox.com](mailto:fabrice@recalbox.com)  
[www.recalbox.com](http://www.recalbox.com)



## IMPORTANT REMINDER

The Recalbox team wants to remind you that this project is developed by volunteers.

**Our OS is free and open-source... made for non-commercial purposes only.**

As such, **commercial use of Recalbox is strictly prohibited.**

Selling our software (or even just including it for free with copyrighted content in a console sold at a premium) is unsafe (updates are usually blocked, outdated, or hardware is highly customized). This is illegal and in many cases, is almost always a scam.